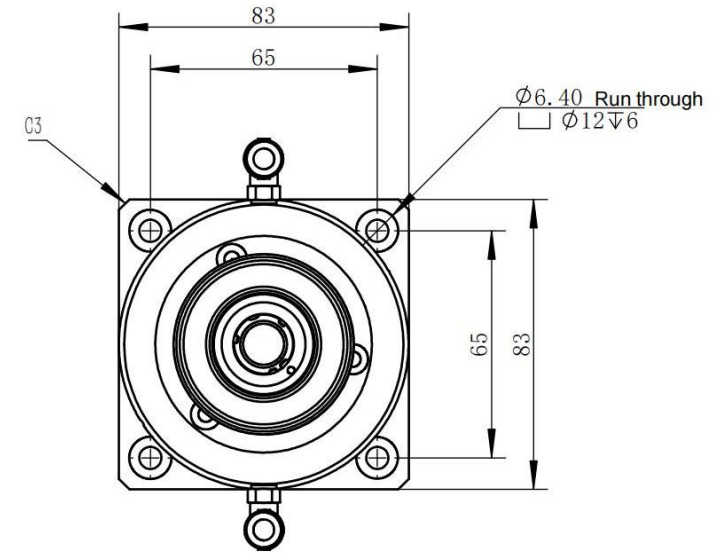
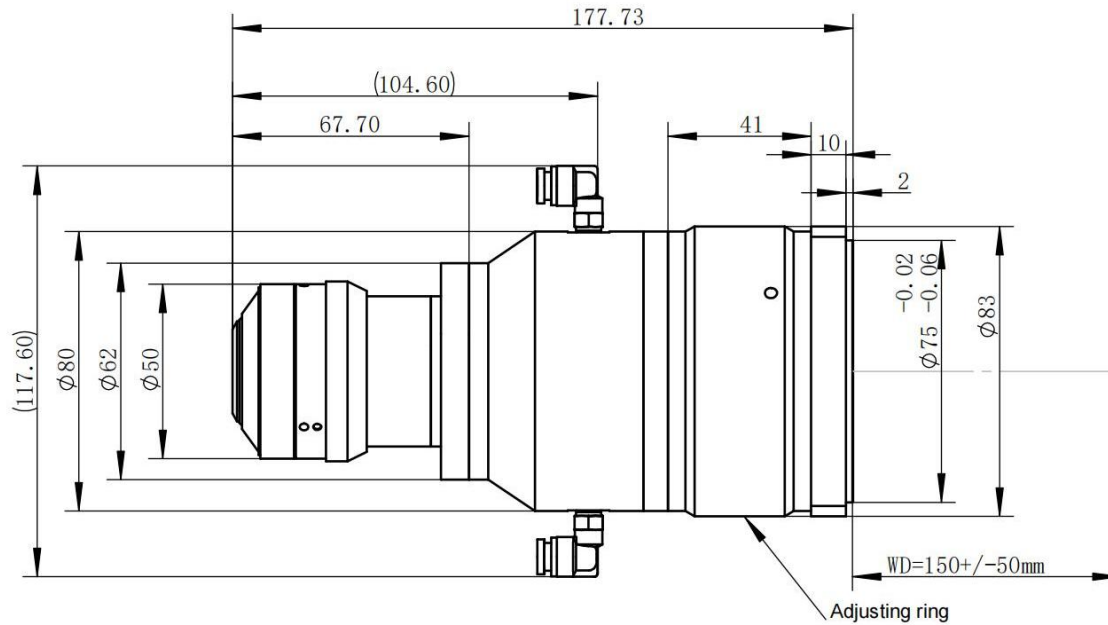


COLLIMATOR

Beam Shaping Module QBH-980-24X24-AW



Parameter description:

1. Design a wavelength band of 976nm, laser with Na0.22, power of 6000W, and laser interface QBH.
2. After passing through this optical system, the beam in the 100-200mm range is a 24 * 24mm square spot with a rounded corner of approximately R2mm.
3. The theoretical beam effect is optimal at WD=150mm.
4. The beam length, width, and fillet size can be fine tuned by adjusting the ring.
5. When the actual laser power exceeds 1000W, it is necessary to connect a water cooling system with a diameter of 6mm and a flow rate of 3-5L/min

